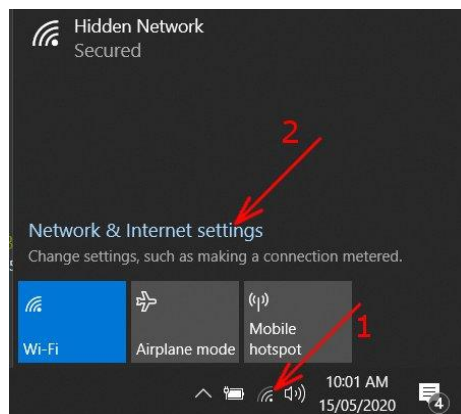
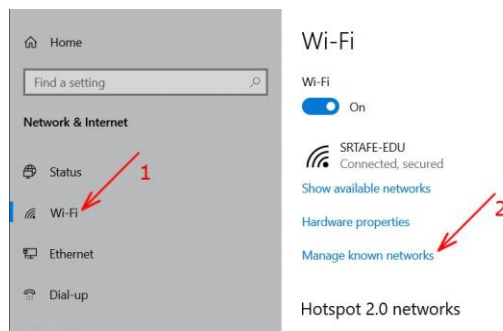


## Manually create Wireless Connection

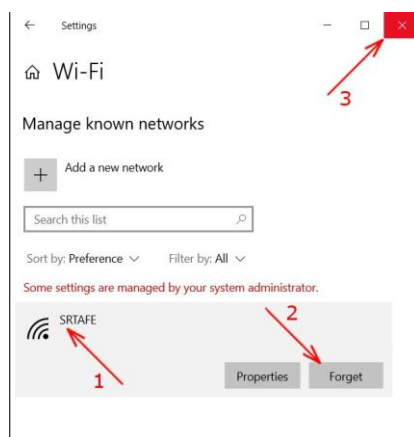
1. Click the Wireless Icon on the task bar.  
Click "Network Internet settings".



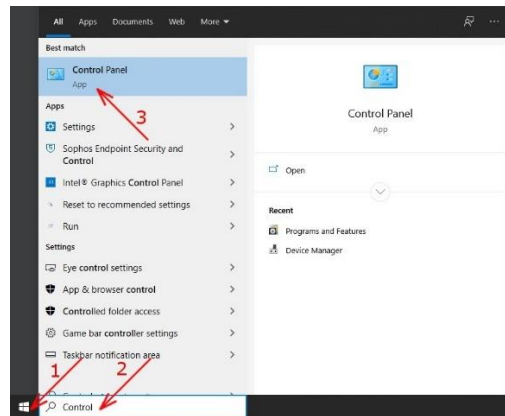
2. Click "WiFi".  
Click "Manage known networks".



3. If you have an "SRTAFE" network.  
Click "SRTAFE".  
Click "Forget"  
Click the X to close the windows.  
Otherwise.  
Click the X to close the windows.

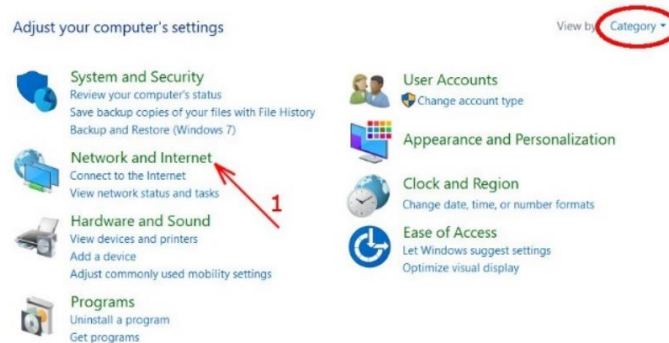


- Click the Start button.  
Type "control".  
Click on the "Control Panel" App.



- Control Panel

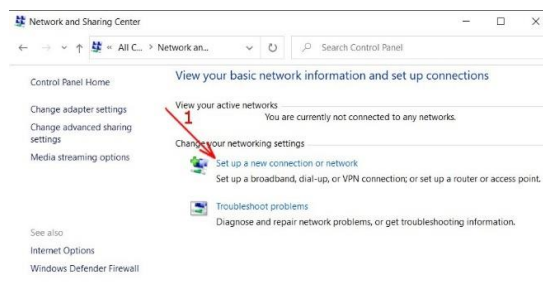
If Control Panel is in Category View, click "Network and internet"



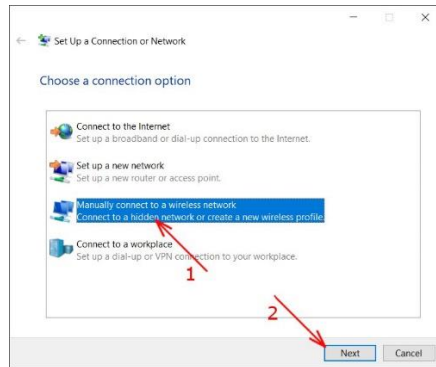
Click "Network and Sharing Center"



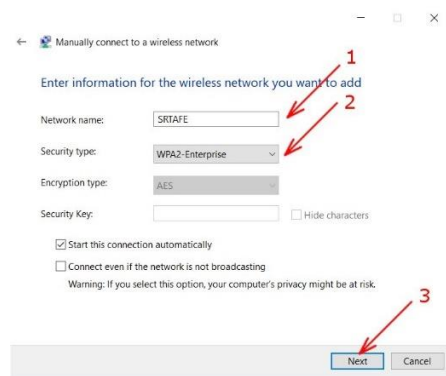
- Click "Setup a new connection or network"



7. Select "Manually connect to a wireless network".  
Click "Next".



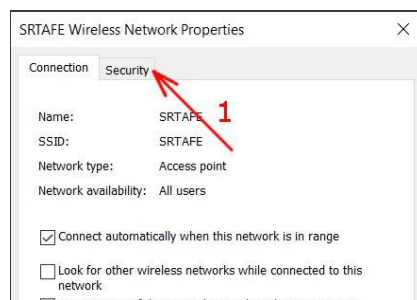
8. Type "SRTAFE" in the Network name field.  
Select "WPA2-Enterprise" in the Security type field.  
Click "Next".



9. Click "Change connection settings".



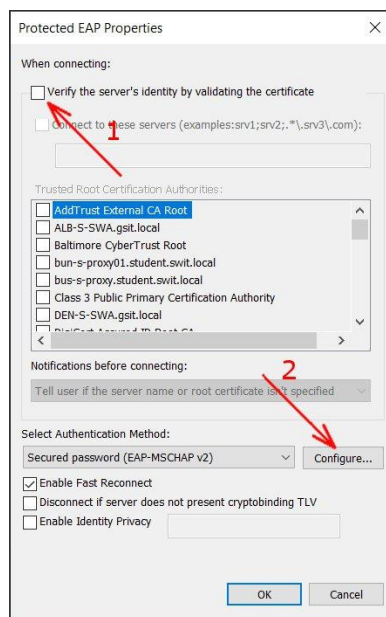
10. Select the "Security" Tab.



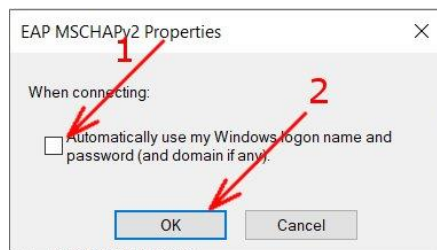
11. Click "Settings".



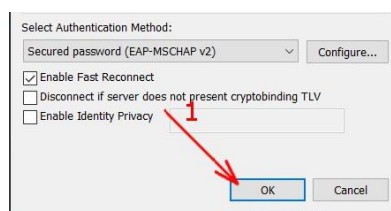
12. Unselect "Verify the server's identity by validating the certificate". Click "Configure".



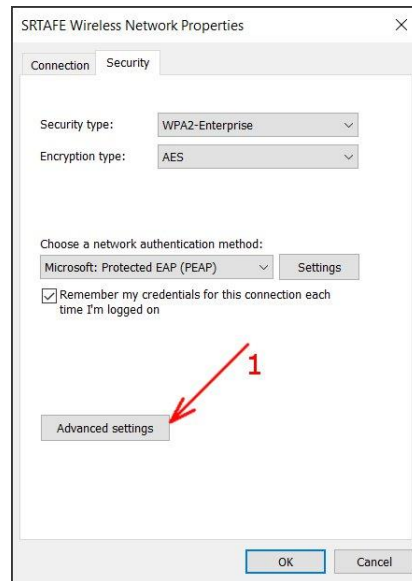
13. Unselect "Automatically use my Windows Logon name and password". Click "OK".



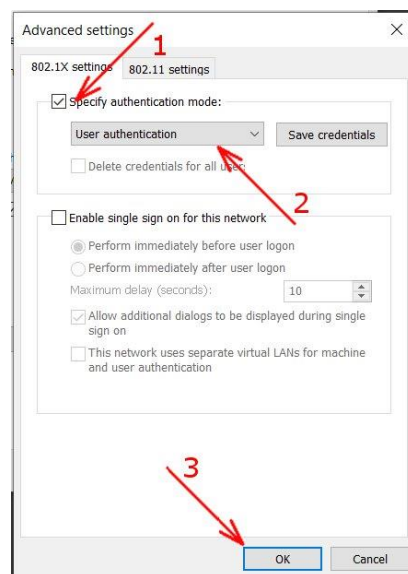
14. Click "OK"



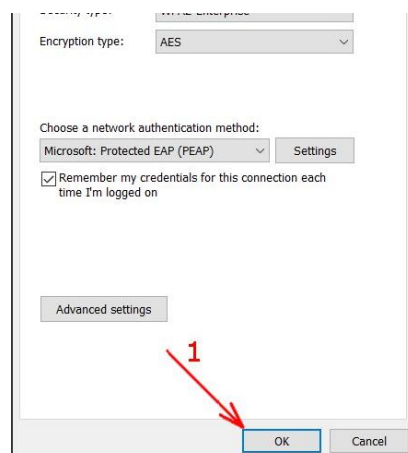
15. Click “Advanced settings”



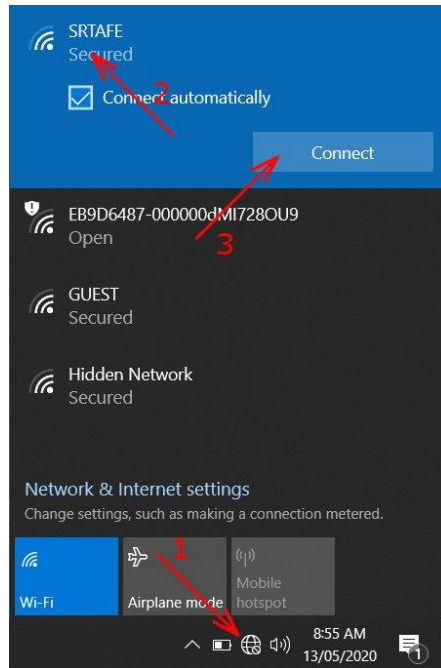
16. Select “Specify Authentication mode”.  
Select “User authentication”  
Click “OK”



17. Click “OK”.



18. Click the Wireless ICON in the task bar.  
Click "SRSAFE"  
Click "Connect"



19. Enter your Username and Password  
Click "OK"

